

Use Case D: Investigating changes in population mental health related to COVID-19

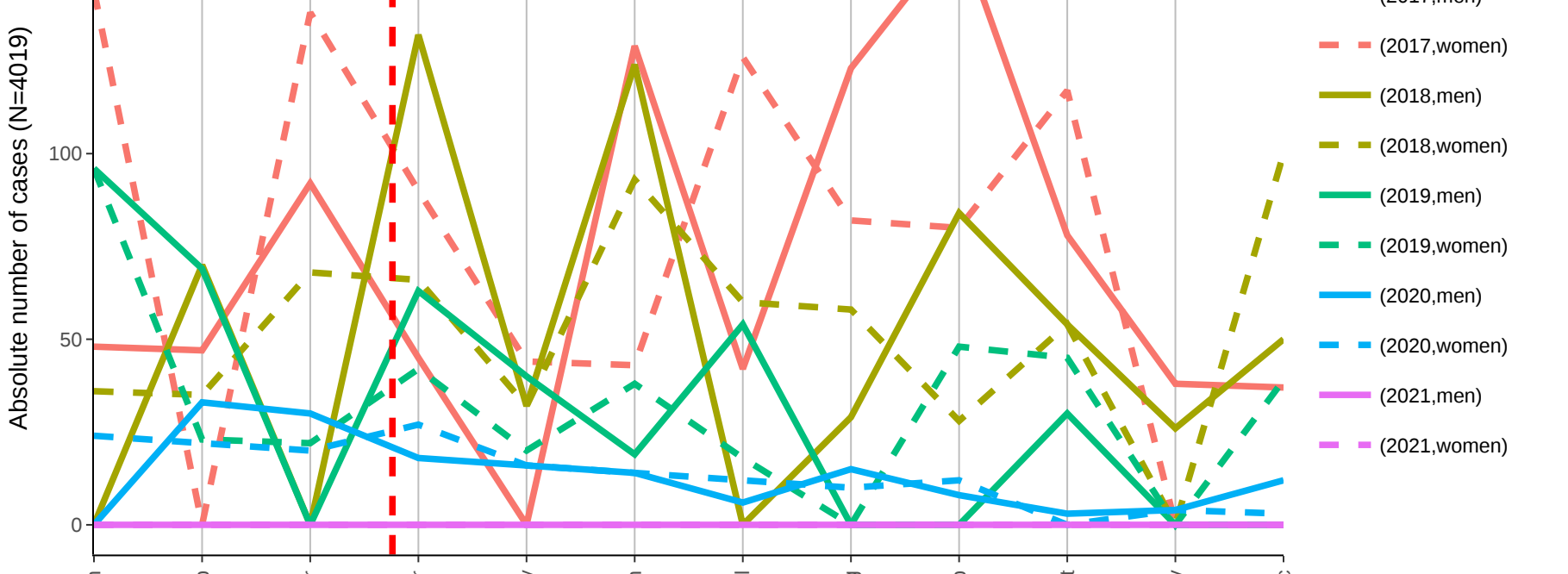
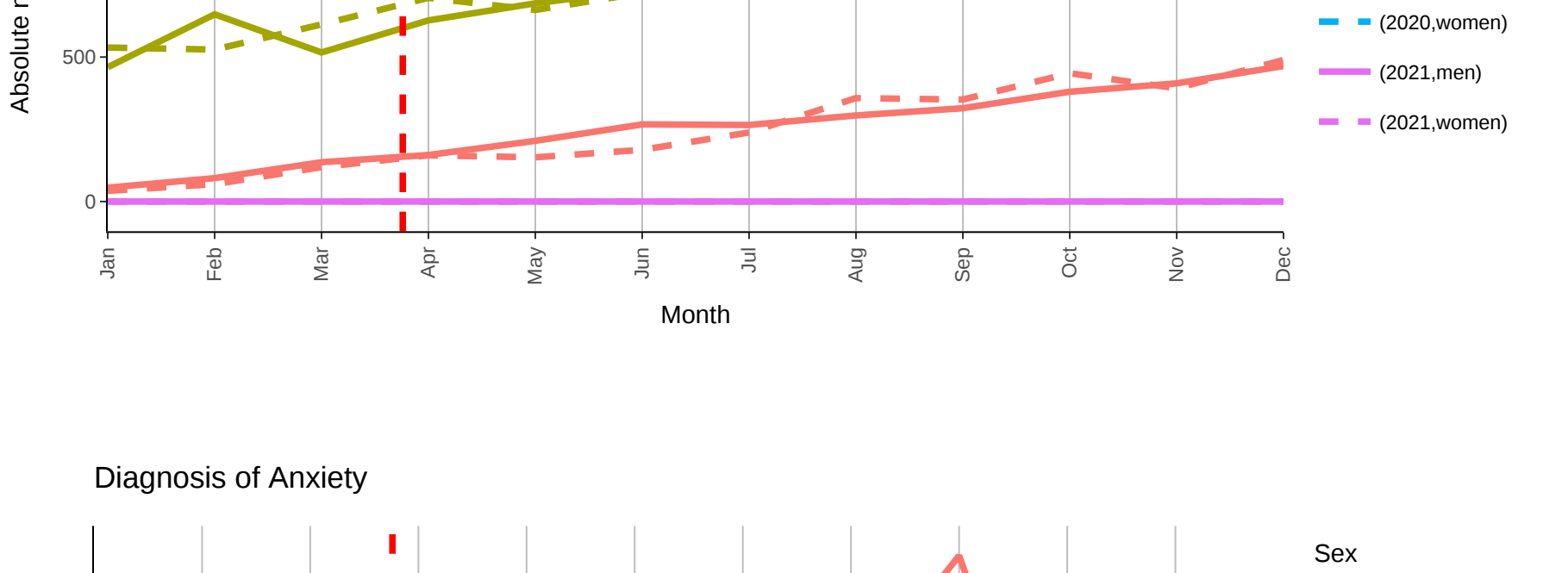
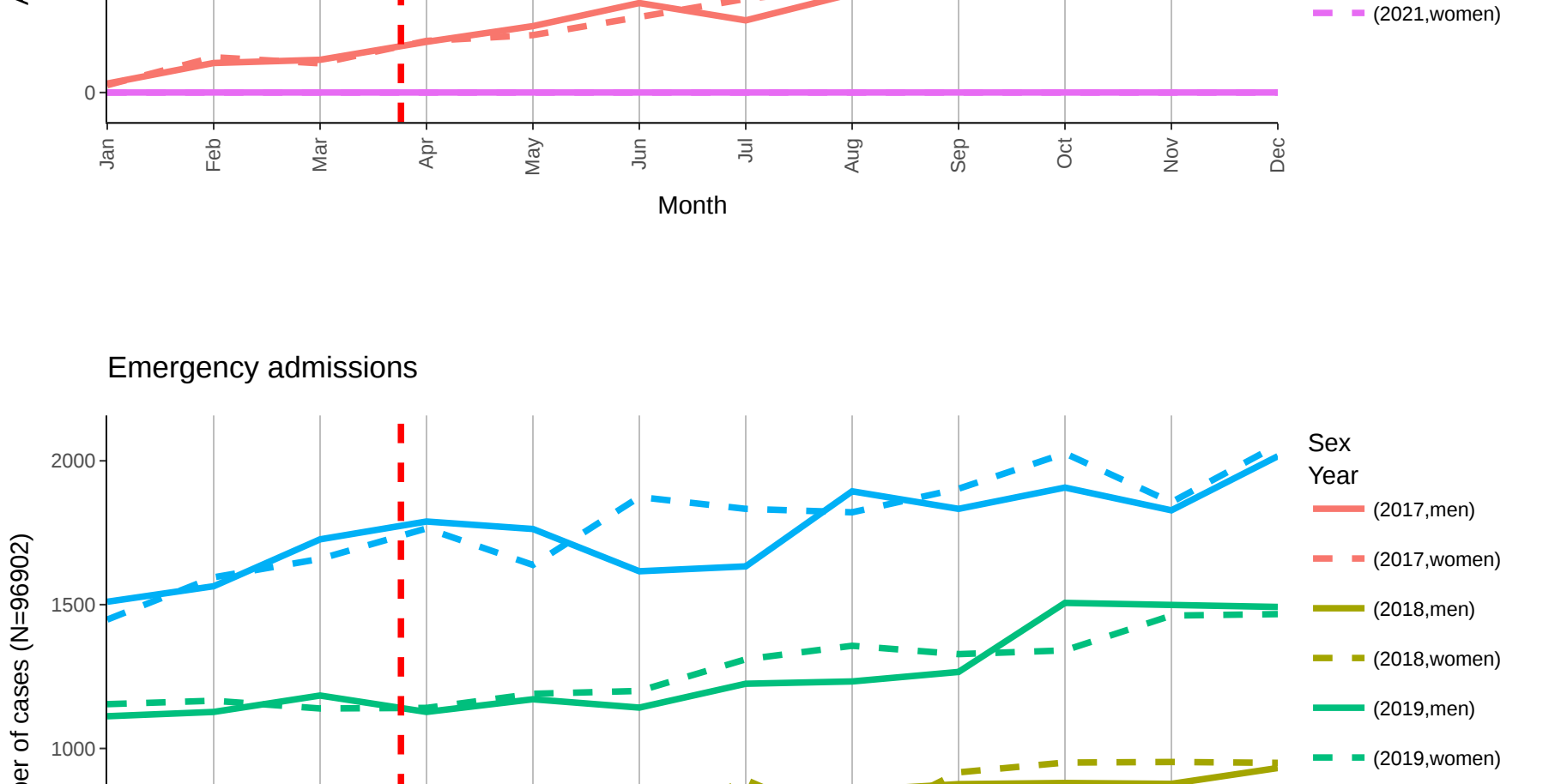
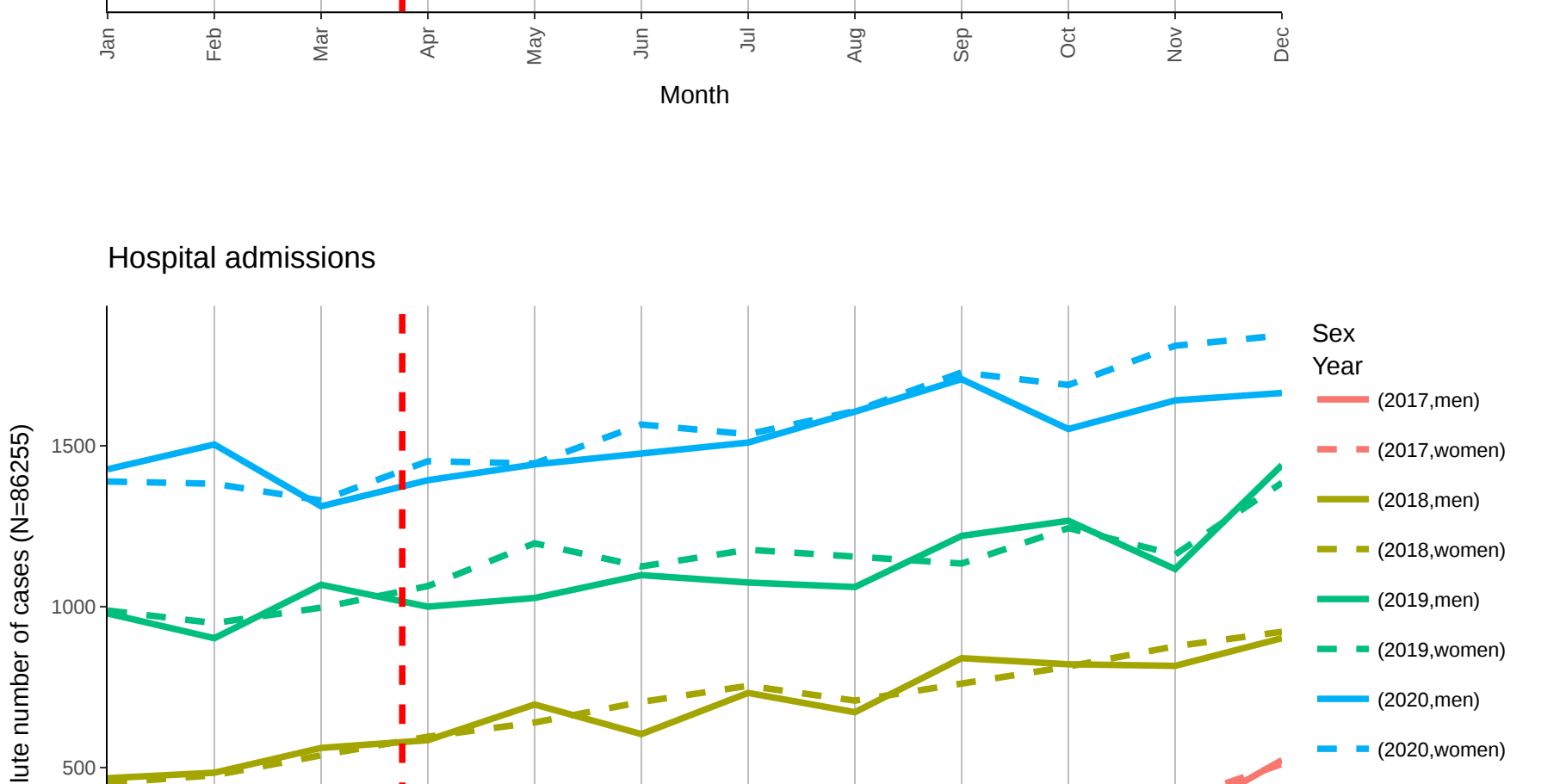
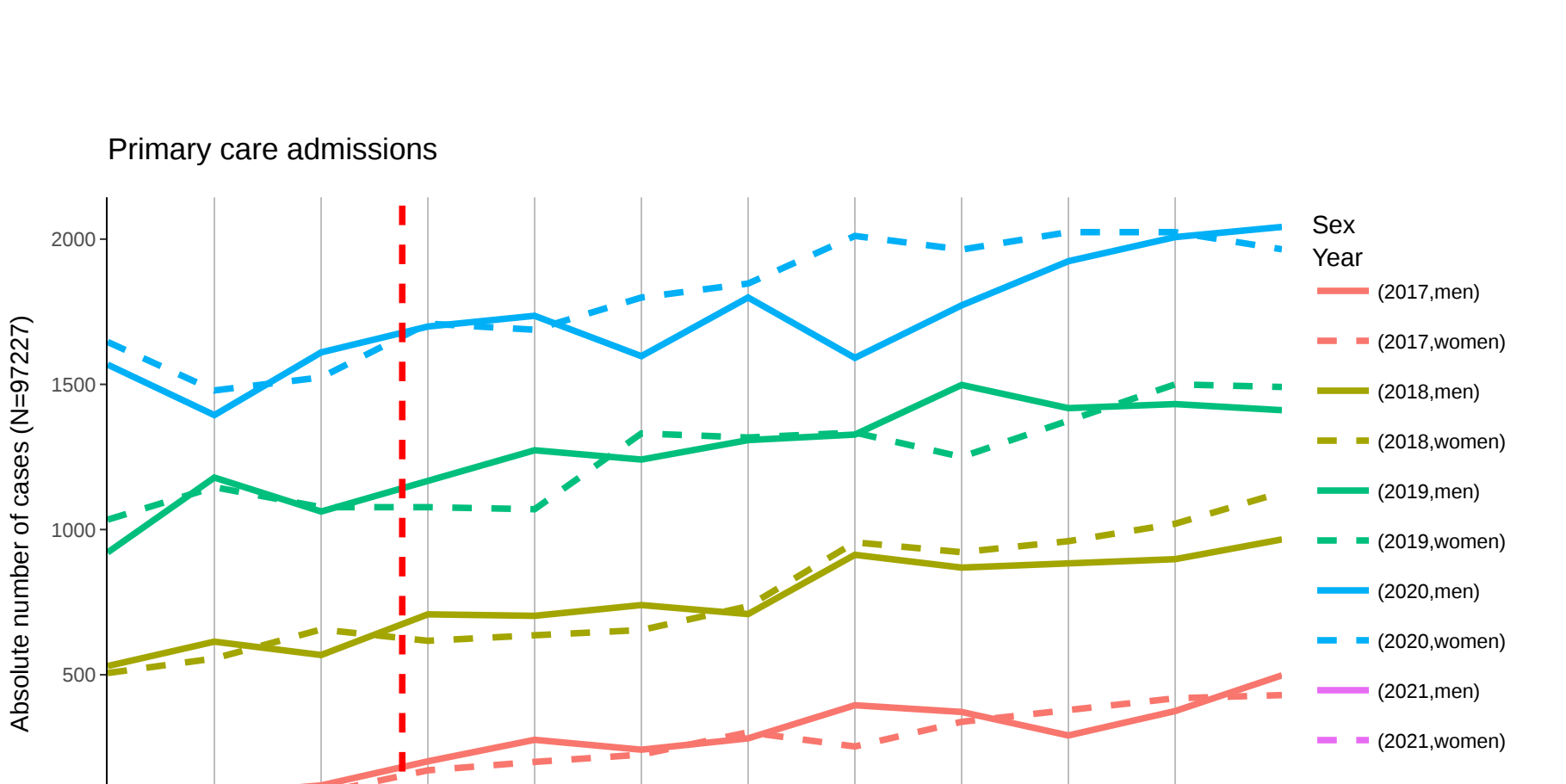
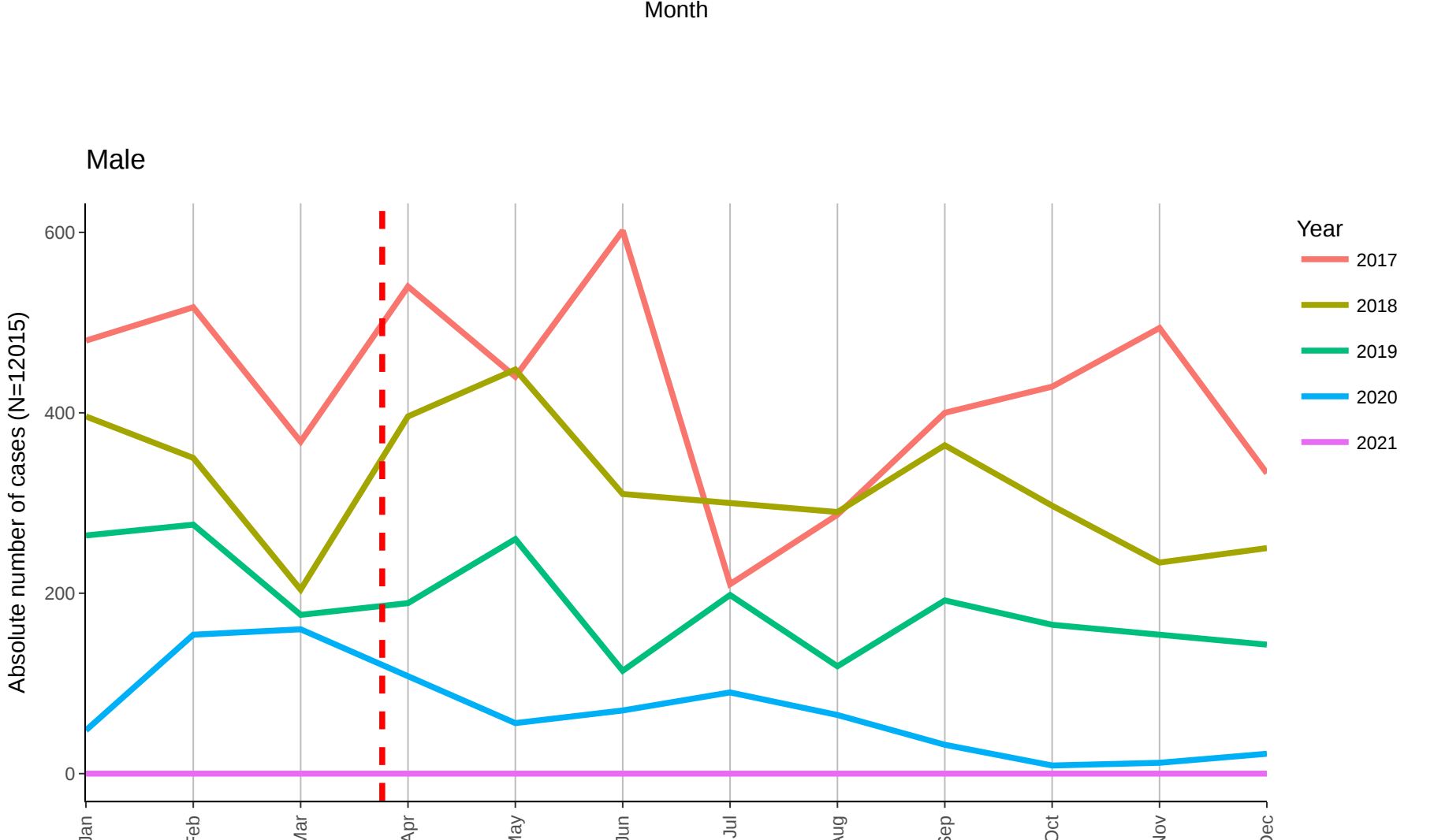
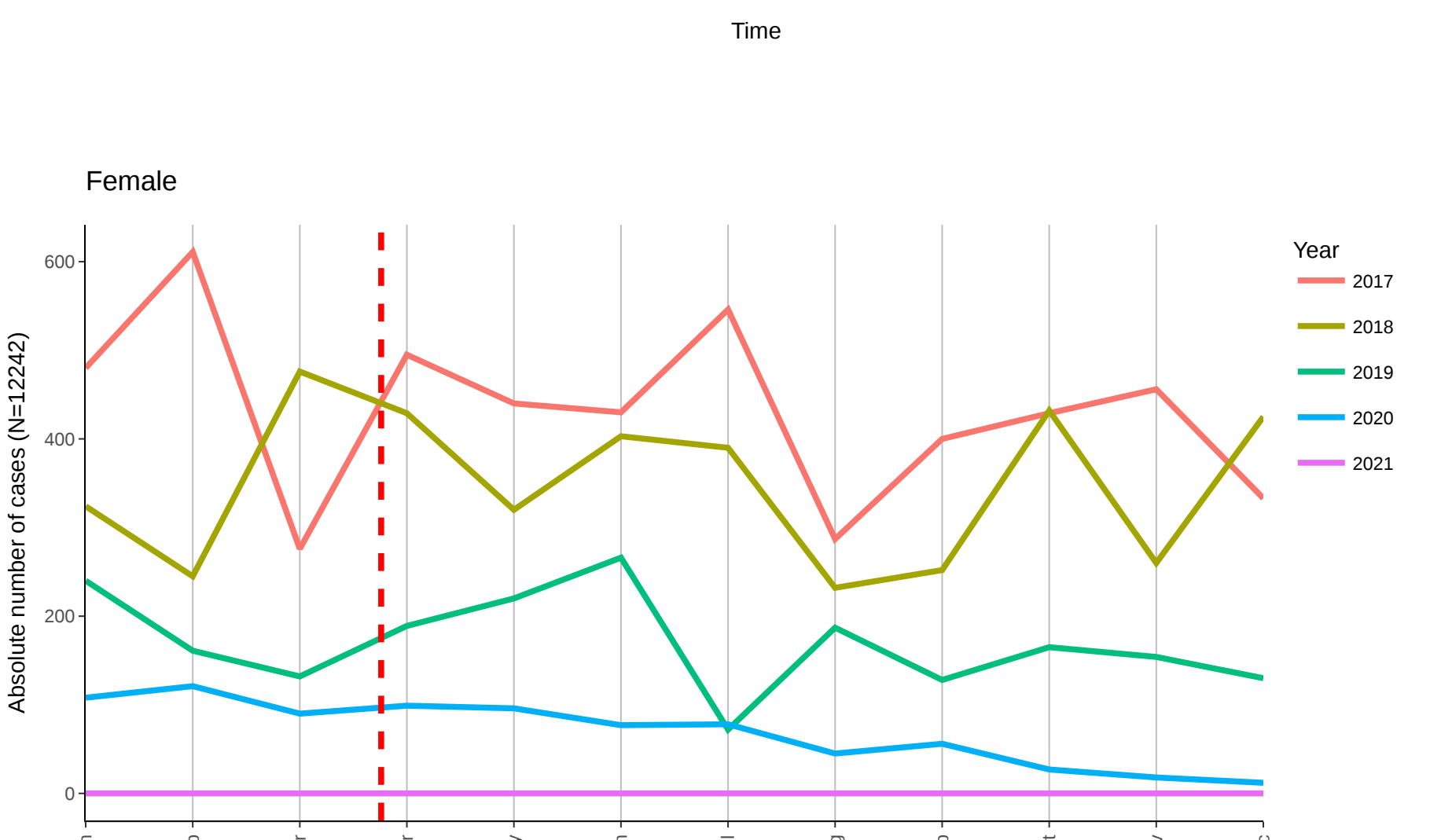
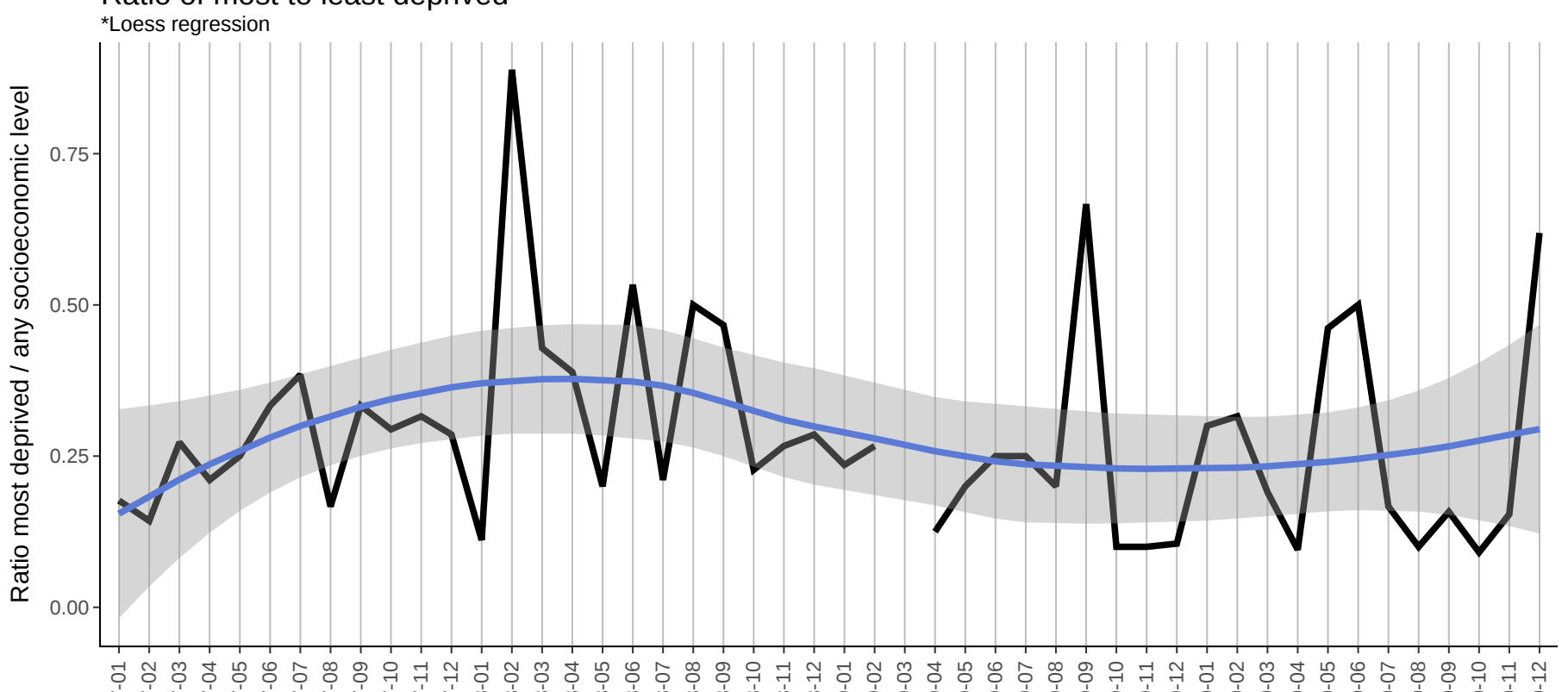
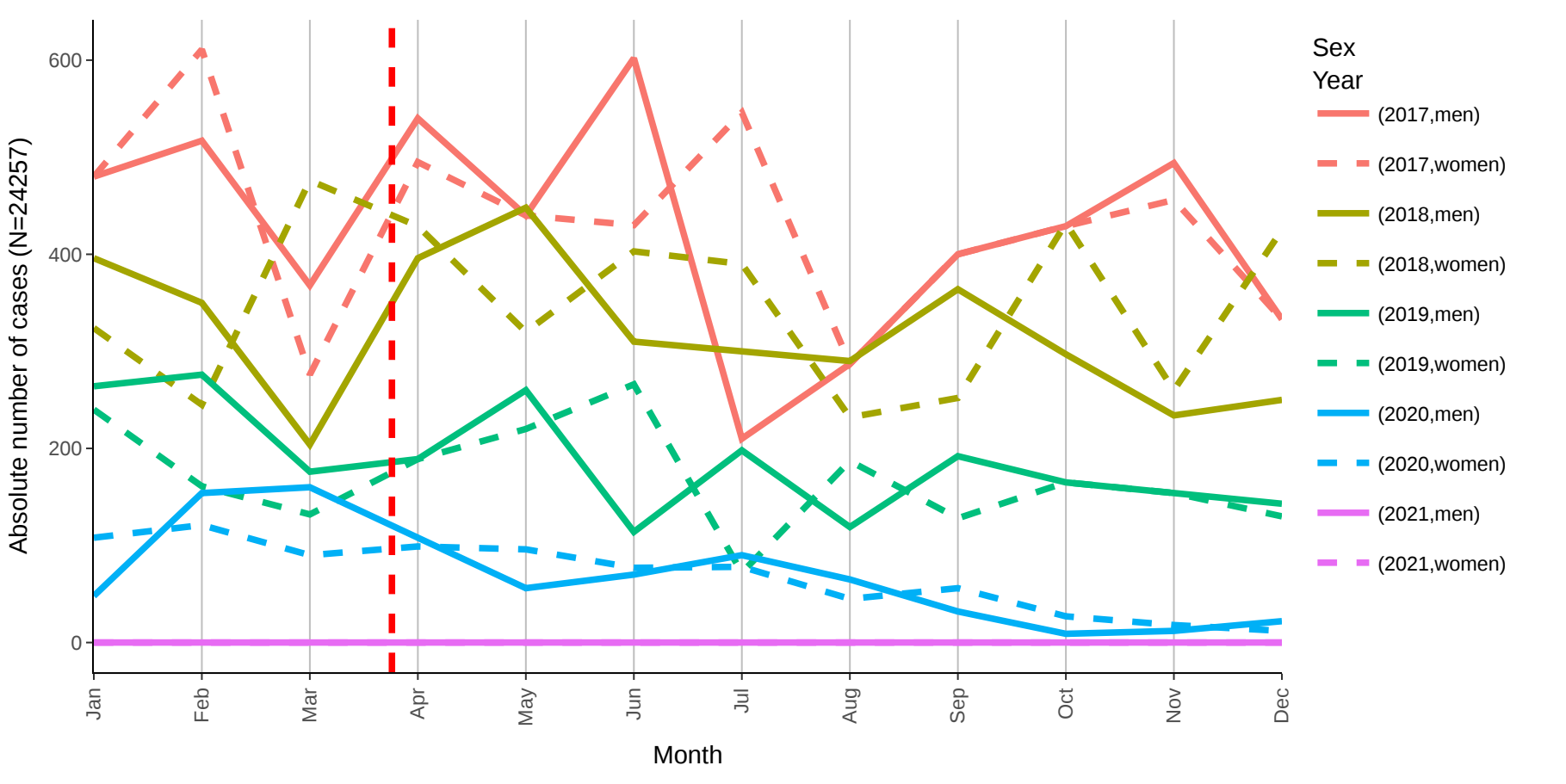
2022-12-10

Use Case D on utilization of health care services by mental health patients during the COVID pandemic

The COVID-19 pandemic and the public health measures imposed to tackle the surge of cases has imposed a heavy burden in population mental health as people has limited social contact or has suffer from the consequences of disease and the derived economic downturn. This use case will explore changes in the utilization of health care services by people with depression or anxiety (as most prevalent mental health issues) derived as indirect effects of the COVID-19 pandemic at population level.

LOCAL ANALYSES

This analysis corresponds with the local part of the analysis (country-specific). Please, provide feedback on your outputs, both data quality analysis (EDA), HTML report and aggregated output to the Use Case B leaders to complete the overall analyses.



Summary table with total monthly cases by indicator

Show entries

Search:

	year	month	sex	total_dx	total_drug	total_dep	total_anx	total_prim_visit	total_hosp_visit	total_emer_visit
1	2017	1	0	480	384	432	48	25	28	48
2	2017	1	1	480	432	336	144	38	23	37
3	2017	10	0	429	314	351	78	291	399	380
4	2017	10	1	429	391	312	117	376	343	444
5	2017	11	0	494	499	456	38	375	335	409
6	2017	11	1	456	344	456	0	419	397	392
7	2017	12	0	333	375	296	37	498	523	469
8	2017	12	1	333	486	333	0	430	511	490
9	2017	2	0	517	519	470	47	88	92	81
10	2017	2	1	611	424	611	0	108	110	60

Showing 1 to 10 of 120 entries

Previous 2 3 4 5 ... 12 Next

New depression/anxiety diagnosis

